

What's New in Windchill[®] Quality Solutions 10.0?

NEW FEATURES AND FUNCTIONS IN WINDCHILL QUALITY SOLUTIONS 10.0

Windchill Quality Solutions 10.0 adds new integration with change management functionality, two new modules, and a wide range of user interface enhancements.

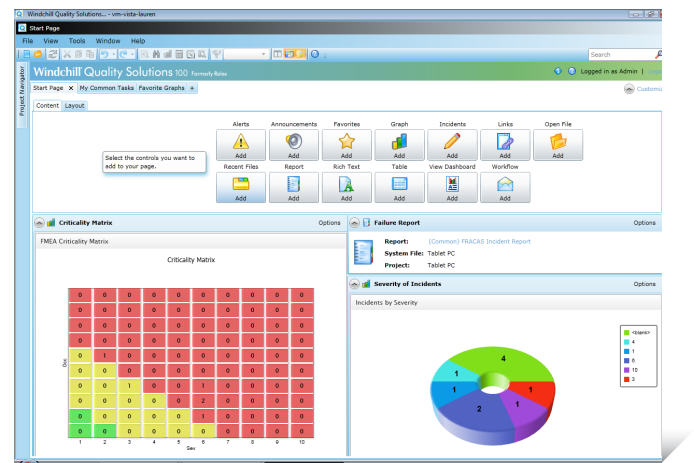
Windchill Quality Solutions 10.0 introduces new features to enhance integrated quality and reliability management across the product development lifecycle. Ensure closed-loop quality management with new integration between Windchill FRACAS and change management functionality. Two new modules support additional quality and reliability processes, including reliability-centered maintenance for aircraft in Windchill MSG-3, and the management of internal quality issues in Windchill Nonconformance. Finally, a host of new product updates enhance the user experience.

Key Benefits

Incorporating Windchill FRACAS into change management

With a connection established between the PDMLink BOM and a system tree in Windchill FRACAS, problems logged in FRACAS may be escalated to the Windchill change management workflow, ensuring an enterprise-wide, closed-loop process to address FRACAS problems and further integrating QLM and PLM functionality. This functionality includes:

- Launch a new CAPA request, change request, or problem report from inside Windchill FRACAS, when additional root cause analysis is required (problem report), when leveraging change management processes (change request), or when high-risk issues require closed-loop verification of change effectiveness (CAPA request)
- Automatically associate the new artifact with the corresponding parts and systems in the Windchill BOM against which the problem was originally logged in Windchill FRACAS



The newly redesigned start page for the [Windchill Quality Solutions Web Access](#) modules (FRACAS, FMEA, and MSG-3) support customizable layouts, display of graphs and reports, multiple start pages, and much, much more.

- Leverage the dynamic, real-time connection between FRACAS and change management to view the current status of associated request(s)

New Windchill MSG-3 module (only in Web Access)

The new Windchill MSG-3 module supports the MSG-3 (Maintenance Steering Group Version 3) reliability standard of the ATA (Air Transport Association). This standard requires the development of a more efficient scheduled maintenance program for aircraft through the use of logical decision-making processes executed using a series of specific, context-dependent questions. In addition to the complete functionality of Windchill FMEA, features include:

- MSI (Maintenance Significant Item) identification, failure effect categorization, and maintenance task selection
- Built-in processes and questions directly from the standard, delivered through robust, logic-enforced diagrams

- Report templates formatted to meet the requirements of the standard

New Windchill Nonconformance module

Boost product quality by recording internal nonconformances in accordance with industry-wide quality standards like ISO 9001, 21 CFR 820, and ISO 13485. The new Windchill Nonconformance module manages the intake, evaluation, investigation, and resolution of internal product nonconformances – or, failures to comply with specifications in material, products, or processes. Features include:

- Quickly and easily communicate critical quality inputs to design to ensure that identified issues aren't manifest in fielded products
- Manage identified issues with functions like containment, corrections, and split lot dispositions
- Powerful workflow functionality, data tracking, and seamless integration with Windchill CAPA ensure a closed-loop process whereby reported issues are seen through to their resolution
- Fully functional reporting capabilities enable the trending of quality improvements, with watchdogs to alert key personnel when specified thresholds are exceeded

New integration between Creo and Windchill FMEA

Import vital Creo product dimensions into Windchill FMEA for inclusion in DVPs (Design Verification Plans) and control plans, ensuring that the critical-to-quality product dimensions, control characteristics, and tolerances defined in the CAD model are communicated as process controls to manufacturing teams. With this new integration:

- Define and designate parameters with tolerance information in the Creo model, and import as product characteristics into Windchill FMEA
- Import into Windchill FMEA via manual or scheduled import processes

Other Features and Specifications

Windchill FMEA

- Enhanced DVP and control plan functionality in Windchill FMEA enables one-to-many, many-to-one, and many-to-many relationships
- Display DVP and control plan information in one report

- Import control plan and DVP data
- API support to import/export control plan and DVP data

Web Access FRACAS and FMEA modules

- Out-of-browser support for Web Access modules
- Web access to the Administrator module to manage user and group permissions
- Newly redesigned, fully customizable start page with drag-and-drop controls includes reports, tables, graphs, rich text control, insert incident, favorites, links, announcements, recent files, workflow items, etc.
 - Create and manage multiple start pages
 - Administrator can assign start pages to users/groups
- Memo fields now support rich text formatting
- View Word® document attachment contents in a report

Other modules

- Subreports enable the display of data from multiple modules in a single report
- Support for the NPRD 2011 reliability standard
- Bring user and group data from an LDAP v3-compliant server into Windchill Quality Solutions Enterprise Edition
- Improved filtering with "or" and "me/my group"
- System tree subtables available in Enterprise Edition
- Easier customization of table/subtable names and display fields
- Audit trail data actions for attachment fields

For More Information

For more information on Windchill Quality Solutions, please visit: PTC.com/products/windchill/quality

© 2011, Parametric Technology Corporation (PTC). All rights reserved. Information described herein is furnished for informational use only, is subject to change without notice, and should not be construed as a guarantee, commitment, condition or offer by PTC. PTC, the PTC Logo, Windchill, and all PTC product names and logos are trademarks or registered trademarks of PTC and/or its subsidiaries in the United States and in other countries. All other product or company names are property of their respective owners. The timing of any product release, including any features or functionality, is subject to change at PTC's discretion.

6957-Windchill-Quality-Solutions-What's-New-DS-EN-1011