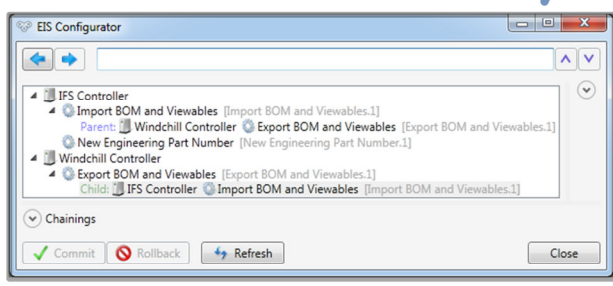
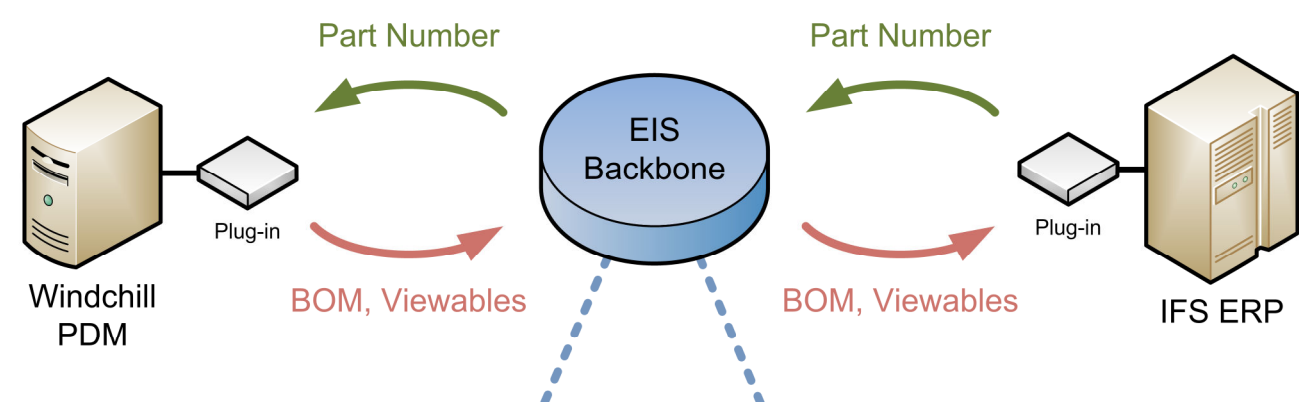
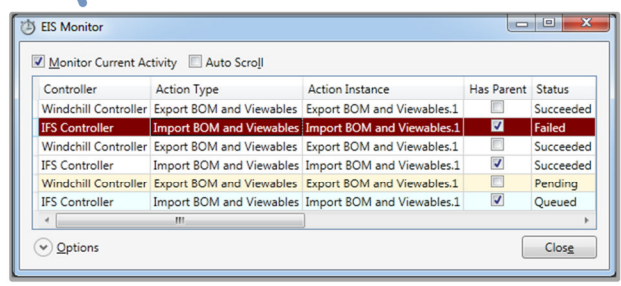


Out-of-Box Integration between PTC Windchill PLM and IFS ERP

- Robust, bidirectional exchange of data between heterogeneous IFS ERP and Windchill PLM systems
- Transfer of BOM, drawings, part numbers, attributes and more...
- Automatically detects Lifecycle or Revision changes or at check-in of objects in PLM
- Flexible, modular data transfer "backbone", with ERP and PLM-specific plug-ins
- Another ERP or PLM system integration requires only a new plug-in, not changes to the backbone
- Transactional, with reliable retry mechanism in case of failure
- Observable in real-time. Fast and scalable. Database-portable
- Out-of-box functionality and flexibility at a competitive price



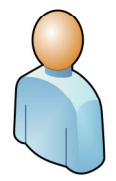
EIS Configurator – “chain” ERP and PDM systems together.



EIS Monitor – observe executions in real time. Fix failed executions.



Administrator



Administrator



User

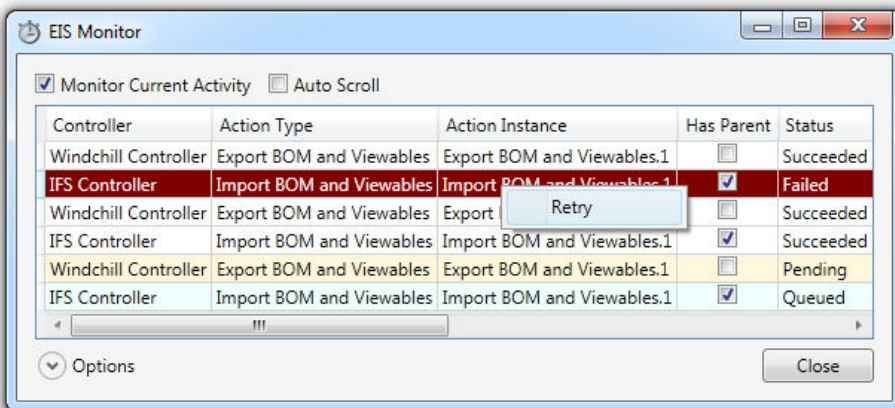
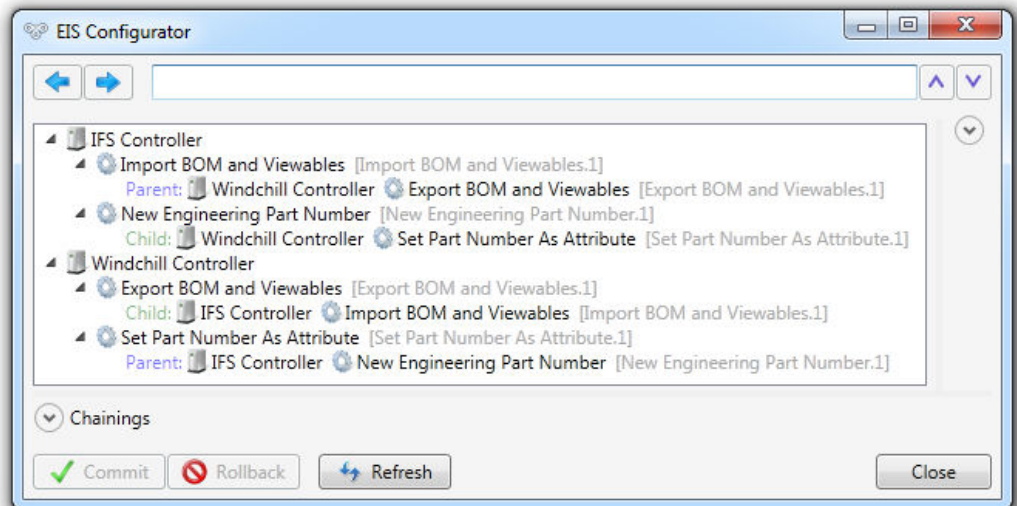
User Experience

The main goal of EIS is to provide a prebuilt connector that quickly integrates heterogeneous systems together and to do it in a way that is minimally disruptive to the end users. It implements a plug-in architecture, where each system has its own set of **integration actions**, such as exporting BOM or generating part number.

Configuring EIS

The **EIS Configurator** is used to "chain" the integration actions together. This way, EIS can be tailored to the customer's existing IT infrastructure in a visual, understandable and flexible manner.

Once actions are chained, they automatically communicate with each other until unchained.



Running EIS

Integration actions are triggered in response to events in the system, such as releasing objects in PDM or through a direct user action. Through the **EIS Monitor**, the user can see the action executions as they happen.

If for any reason an action fails, that fact is recorded in the EIS backbone, so the action can be **retried** at later time.