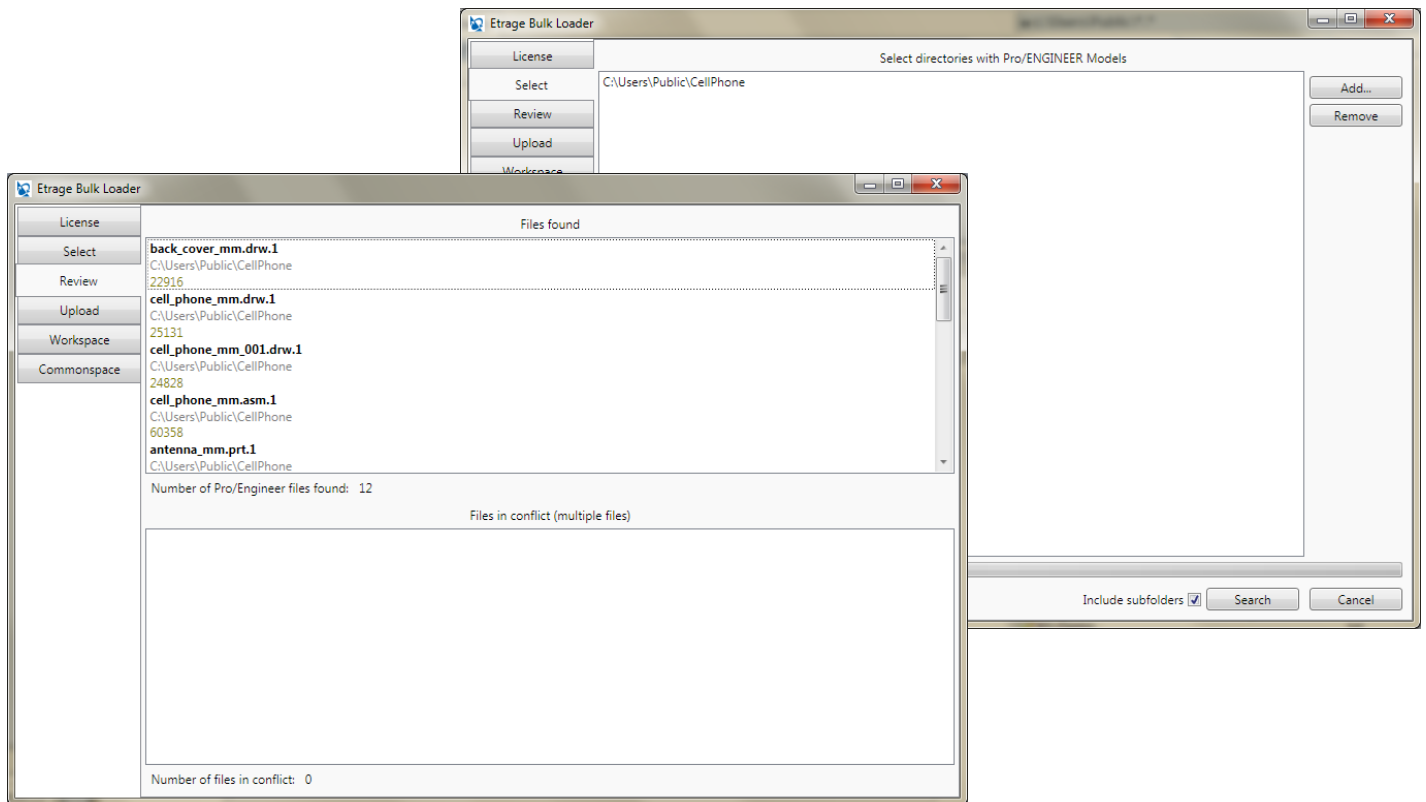


Etrage Bulk Loader for Windchill

Functionality and Flexibility at a Competitive Price

- The Bulk Loader streamlines the process for uploading a large number of CAD files into Windchill PDMLink and INTRALINK
- Creo and Pro/ENGINEER Wildfire drawings, assemblies and parts now. Other CAD soon.
- Interactive batch processing
- Validates against existing CAD files in Windchill
- Verifies CAD revisions and identifies conflicts
- Processes models in a Windows file system and sub-folders

Selection of Folders, Sub-Folders and Models



Etrage Bulk Loader for Windchill

Knowledge, Experience and Customer Commitment

Etrage Bulk Loader - Upload configuration

License: Select, Review, Upload, Workspace, Commonsense

Pro/Engineer Starting Options

Pro/Engineer start command: C:\PTC\proe\wildfire 4.0\bin\proe1.bat

ProcommMessage file path: C:\PTC\proe\wildfire 4.0\i486_ntobj\pro_comm_msg.exe

Graphic Mode Interactive

Windchill Options

Windchill URL: http://wt91m010.dyndns.org/windchill/

User name: demo

Etrage Bulk Loader - Uploaded models status

| Name | Number | CadName | Type | Version | Workspace | ContainerName | Oid | AuthApp | CheckedIn |
|-------|--------|-----------------------|-------|---------|-----------|---------------|-------|---------|-----------|
| <New> | <New> | back_cover_mm.drw | <New> | <New> | <New> | <New> | <New> | <New> | <New> |
| <New> | <New> | back_cover_mm.prt | <New> | <New> | <New> | <New> | <New> | <New> | <New> |
| <New> | <New> | cell_phone_mm.drw | <New> | <New> | <New> | <New> | <New> | <New> | <New> |
| <New> | <New> | cell_phone_mm.asm | <New> | <New> | <New> | <New> | <New> | <New> | <New> |
| <New> | <New> | front_cover_mm.prt | <New> | <New> | <New> | <New> | <New> | <New> | <New> |
| <New> | <New> | lens_mm.prt | <New> | <New> | <New> | <New> | <New> | <New> | <New> |
| <New> | <New> | earpiece_mm.prt | <New> | <New> | <New> | <New> | <New> | <New> | <New> |
| <New> | <New> | microphone_mm.prt | <New> | <New> | <New> | <New> | <New> | <New> | <New> |
| <New> | <New> | pc_board_mm.prt | <New> | <New> | <New> | <New> | <New> | <New> | <New> |
| <New> | <New> | keypad_mm.prt | <New> | <New> | <New> | <New> | <New> | <New> | <New> |
| <New> | <New> | antenna_mm.prt | <New> | <New> | <New> | <New> | <New> | <New> | <New> |
| <New> | <New> | cell_phone_mm_001.drw | <New> | <New> | <New> | <New> | <New> | <New> | <New> |

Etrage Bulk Loader - Checkin models status

| Name | Number | CadName | Type | Version | Workspace | ContainerName | Oid | AuthApp | CheckedIn |
|-----------------------|-----------------------|-----------------------|----------|---------|-----------------|---------------|------------------------------|--------------|------------|
| lens_mm.prt | LENS_MM.PRT | lens_mm.prt | CAD Part | A.1 | TEMP_ETRAGE_WS1 | Project-0055 | VR\wt.epm.EPMDocument:302943 | Pro/ENGINEER | Checked in |
| antenna_mm.prt | ANTENNA_MM.PRT | antenna_mm.prt | CAD Part | A.1 | TEMP_ETRAGE_WS1 | Project-0055 | VR\wt.epm.EPMDocument:302942 | Pro/ENGINEER | Checked in |
| back_cover_mm.prt | BACK_COVER_MM.PRT | back_cover_mm.prt | CAD Part | A.1 | TEMP_ETRAGE_WS1 | Project-0055 | VR\wt.epm.EPMDocument:302865 | Pro/ENGINEER | Checked in |
| cell_phone_mm.drw | CELL_PHONE_MM.DRW | cell_phone_mm.drw | Drawing | A.1 | TEMP_ETRAGE_WS1 | Project-0055 | VR\wt.epm.EPMDocument:302939 | Pro/ENGINEER | Checked in |
| microphone_mm.prt | MICROPHONE_MM.PRT | microphone_mm.prt | CAD Part | A.1 | TEMP_ETRAGE_WS1 | Project-0055 | VR\wt.epm.EPMDocument:302938 | Pro/ENGINEER | Checked in |
| cell_phone_mm.asm | CELL_PHONE_MM.ASM | cell_phone_mm.asm | Assembly | A.1 | TEMP_ETRAGE_WS1 | Project-0055 | VR\wt.epm.EPMDocument:302936 | Pro/ENGINEER | Checked in |
| cell_phone_mm_001.drw | CELL_PHONE_MM_001.DRW | cell_phone_mm_001.drw | Drawing | A.1 | TEMP_ETRAGE_WS1 | Project-0055 | VR\wt.epm.EPMDocument:303079 | Pro/ENGINEER | Checked in |
| front_cover_mm.prt | FRONT_COVER_MM.PRT | front_cover_mm.prt | CAD Part | A.1 | TEMP_ETRAGE_WS1 | Project-0055 | VR\wt.epm.EPMDocument:302937 | Pro/ENGINEER | Checked in |
| back_cover_mm.drw | BACK_COVER_MM.DRW | back_cover_mm.drw | Drawing | A.1 | TEMP_ETRAGE_WS1 | Project-0055 | VR\wt.epm.EPMDocument:302866 | Pro/ENGINEER | Checked in |
| earpiece_mm.prt | EARPIECE_MM.PRT | earpiece_mm.prt | CAD Part | A.1 | TEMP_ETRAGE_WS1 | Project-0055 | VR\wt.epm.EPMDocument:302940 | Pro/ENGINEER | Checked in |
| pc_board_mm.prt | PC_BOARD_MM.PRT | pc_board_mm.prt | CAD Part | A.1 | TEMP_ETRAGE_WS1 | Project-0055 | VR\wt.epm.EPMDocument:302944 | Pro/ENGINEER | Checked in |
| keypad_mm.prt | KEYPAD_MM.PRT | keypad_mm.prt | CAD Part | A.1 | TEMP_ETRAGE_WS1 | Project-0055 | VR\wt.epm.EPMDocument:302941 | Pro/ENGINEER | Checked in |

Number of models: 12

Check In