

Top 10 Reasons to Move from Pro/INTRALINK® 3.x to Pro/INTRALINK 9.0

With its Web-based architecture built on Windchill® technology, plus major capability and performance enhancements, Pro/INTRALINK 9.0 improves the productivity of Pro/ENGINEER users and workgroups.

Now simpler to use, more powerful and connected to the Web, Pro/INTRALINK 9.0 is the ultimate workgroup data management solution for Pro/ENGINEER®.

Here are the top ten reasons for moving to Pro/INTRALINK 9.0.

1. High Performance Wide Area Network (WAN)

In today's highly competitive environment, engineering teams are now spread across the globe. With dispersed teams accessing a single shared database, you need exceptional performance from your Wide Area Network (WAN). Pro/INTRALINK 9.0 provides many times the WAN performance of earlier generations for distributed workgroups, while maintaining comparable LAN performance. That means greater design productivity, lower overhead costs and faster time to market.

2. Effectively Collaborate with Partners and Vendors

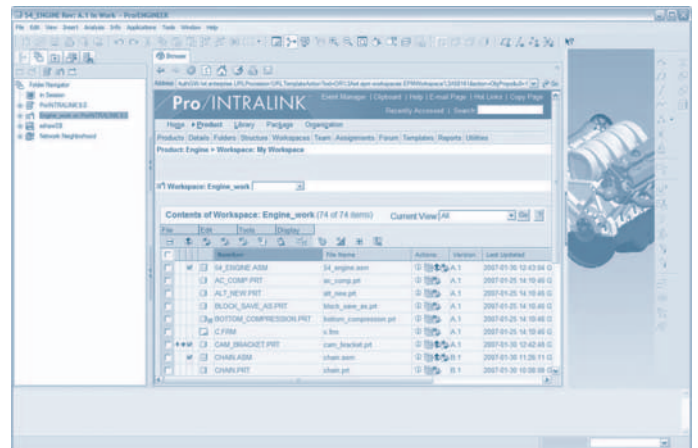
Today's collaborative design environment includes multiple contributors: distributed engineering organizations, non-engineering groups, partners and sub-contractors. The right people must be able to access the right information easily and efficiently. With its modern, Web-based architecture, Pro/INTRALINK 9.0 enables all appropriate design stakeholders to have instant access to relevant data.

3. Accommodates More Users, More Complex Environments

Need to add new designers, engineers or enterprise users to your team? No problem. Pro/INTRALINK 9.0 is 100% scalable, so it can easily handle an increased data management workload when adding new users.

4. Streamlined Graphical User Interface

With Pro/INTRALINK 9.0, Pro/ENGINEER users can perform all data management commands directly within the Pro/ENGINEER browser. Data management functions such as downloading and uploading models are fully integrated with Pro/ENGINEER. With this highly efficient user interface, engineers can perform common data management tasks with fewer mouse clicks.



Pro/INTRALINK 9.0 features a streamlined user interface that's fully integral with Pro/ENGINEER.

5. Comprehensive Pro/ENGINEER Data Management

Pro/INTRALINK 9.0 delivers the same Pro/ENGINEER data management capabilities you are familiar with from Pro/INTRALINK 3.x. This includes support for advanced Pro/ENGINEER capabilities such as Family Tables, Skeletons, and Simplified Representations.

6. Continued Growth – More New Features in Pro/INTRALINK 9.0

PTC continues to invest in Pro/INTRALINK. Pro/INTRALINK 9.0 has new capabilities above Pro/INTRALINK 8.0, including advancements in “Save As” capabilities and new offline workspace features.

7. Investment Protection

Pro/INTRALINK 9.0 is available free of charge to active Pro/INTRALINK 3.x maintenance customers, thus protecting your Pro/INTRALINK license investment. Also, since Pro/INTRALINK and Windchill PDMLink now share the same underlying technology platform, customers will benefit from PTC's continual and focused R&D effort. The Pro/INTRALINK 9.0 architecture provides a solid foundation for carrying Pro/INTRALINK well into the future.

Capability Comparison: Pro/INTRALINK 3.x, Pro/INTRALINK 9.0, Windchill PDMLink 9.0

Capabilities	Pro/INTRALINK 3.x	Pro/INTRALINK 9.0	Windchill PDMLink 9.0
Product information control			
Pro/ENGINEER data management	●	●	●
Drag-and-drop with Pro/ENGINEER Wildfire ¹		●	●
Heterogeneous mechanical and electrical CAD integrations			●
Document management	•	○	●
Optional archive of information		●	●
Product development process control			
Automated processes driven by workflow			●
Change management (Simple, fast and full tracks, etc.)	•	•	●
Configuration management	•	•	●
States and gates based upon lifecycle management	•	○	●
Turnkey ERP integration with business logic (Windchill ESI)			●
Seamless interoperability with optional project collaboration and management (Windchill [®] ProjectLink [™])			●
Optional classification and design reuse (Windchill [®] PartsLink [™] classification and reuse)			●
Enterprise accessibility			
Broad information access with Web browser-based interface	•	●	●
Dynamic preview for Pro/ENGINEER users	•	•	●
Optional visualization client	○	●	●
Optional ECAD design validation			●
Enterprise pricing for non-engineering users			●
Reporting capabilities based on Cognos 8 Business Intelligence			●
Optional Manufacturing Process Management (Windchill [®] MPMLink [™])			●

Capability Key: • = Limited ○ = Partial ● = Complete

Pro/INTRALINK 9.0 requires Pro/ENGINEER Wildfire 3.0

8. Unified Growth Path for Data Management

Since Pro/INTRALINK 9.0 shares the same architecture as Windchill 9.0, PTC customers now have a single, consistent and unified data management path into the future. PTC realizes that every customer has unique design environments and data management needs, and some customers may never require the power of Windchill PDMLink. Yet, because of the unification of PTC's data management offerings, Pro/INTRALINK 9.0 customers who need broader enterprise content and process management capabilities can easily upgrade to Windchill[®] PDMLink[™].

9. Tools and Services that Ease the Process

To ensure a fast and easy transition, PTC offers a Pro/INTRALINK migrator tool for migrating Pro/INTRALINK 3.X data and DIVISION graphic viewables to Pro/INTRALINK 9.0. In addition, PTC has developed the services, training and methodology to help customers move to Pro/INTRALINK 9.0. Our goal is to make your transition fast, easy and complete.

10. Faster Visualization

The optional ProductView Lite that's embedded in Pro/INTRALINK 9.0 has dramatic performance improvements in the loading, rendering, and interaction of visual data. Now, extremely large visual data models can be easily shared across multiple, remote sites.

Pro/INTRALINK 9.0: The Premier Pro/ENGINEER Workgroup Data Management Solution

Getting your Pro/ENGINEER data under control can lead to improved design productivity and shortened time-to-market. With its many enhancements, Pro/INTRALINK 9.0 is the ultimate tool for workgroup data management. The time to migrate is now! Learn more about the migration tools and services at www.ptc.com/go/prointraLink and see how easy the migration can be.

NOTE: The timing of any product release, including any features or functionality, is subject to change at PTC's discretion.

Copyright ©2007, Parametric Technology Corporation (PTC)—All rights reserved under copyright laws of the United States and other countries. Information described herein is furnished for informational use only, is subject to change without notice, and should not be construed as a guarantee, commitment, condition or offer by PTC. PTC, the PTC Logo, and all PTC product names and logos are trademarks or registered trademarks of PTC and/or its subsidiaries in the United States and in other countries.